



VACATIONS
LUXURY CONCEPTS

洪崖洞
HONGYA CAVE

重庆小天鹅

5D3N 重庆 武隆

CHONGQING WULONG



Chongqing is one of China's four federal territory (the other three cities: Beijing, Shanghai, and Tianjin). The city covers an area of 82,400 sqkm and has over 30 million population, It is one of the world's 10 most populous cities.

重庆是中国的四个中央直辖市之一（另外三个是北京、上海、天津），全市面积8.24万平方公里，全市常住人口3千万人以上，是世界上10大市域人口最多的城市。

No Shopping 无购物

2026: Saturday 星期六
2027: Thursday 星期四

Local Delicacies 当地美食

Wulong Delicacies 武隆风味 | Free-range Chicken Flavor 土鸡风味
Bayu Cuisine 巴渝风味 | Chongqing Cuisine 渝菜风味
Mountain City Cuisine 山城风味 | YuanYang Hot Pot Flavor 鸳鸯火锅

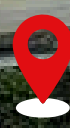
Famous Tourist Spot 著名地标

Hongya Cave 洪崖洞 | Three Natural Bridges 天坑三桥
Danzi Stone Old Street 弹子石老街 | Guanyinqiao Pedestrian Street 观音桥步行街

Request For PRIVATE GROUP is subject to minimum 16 ADULTS
要求独立成团人数需要至少16大人

GROUND TRAVEL PACKAGE Fare Excluded Air Ticket
地接旅游配套费用不含飞机票





重庆

因“双重喜庆”而得名，别称山城。毗邻湖北、湖南、贵州、四川及陕西。以电脑为主的电子工业是重庆第一支柱产业，是全球最大的笔记本电脑生产基地；其余的是汽车和摩托车产业、电子信息业、装备制造、医药化工、材料工业、能源工业、消费品产业等。

D1 吉隆坡 ✈️ 重庆

乘搭飞往中国重庆的航班。

CKG



KUL

D2 重庆-武隆

抵达机场，由专业导游接机，随后入住酒店休息。早餐后，乘车前往武隆 (车程约3.5小时)，世界自然遗产-**天坑三桥** (含环保车+360度旋转电梯+出口电瓶车)、**仙女山森林公园** (含小火车)。



天坑三桥

D3 武隆-重庆

早餐后，乘车前往重庆 (约3.5小时)，**弹子石老街**、**长嘉汇观景平台**、**长江索道** (单程)、**观音桥步行街**。



弹子石老街

D4 重庆



早餐后，游览**磁器口古镇**网红景点；**李子坝轻轨站**观轻轨穿楼、外观**人民大礼堂**、**十八梯传统风貌区**、**解放碑步行街**、网红景点**洪崖洞夜景**。晚餐后，前往机场。



人民大礼堂

D5 重庆 ✈️ 吉隆坡

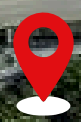
乘搭飞机返回甜蜜的家。



车购: 重庆土特产、小吃

当地风味: 武隆风味、土鸡风味、巴渝风味、渝菜风味、山城风味、鸳鸯火锅

以上安排与行程是以当地旅行社最终安排为准



Chongqing

derived from "Double Celebration", is also known as the Mountain City. It borders Hubei, Hunan, Guizhou, Sichuan, and Shaanxi provinces. The electronics industry, primarily focused on computers, is Chongqing's leading pillar industry, and it is the world's largest notebook computer manufacturing base. Other pillar industries include automobiles and motorcycles, electronics and information technology, equipment manufacturing, pharmaceuticals and chemicals, materials, energy, and consumer goods.

D1 KUALA LUMPUR ✈️ CHONGQING

Depart from KLIA to Chongqing.

D2 CHONGQING-WULONG

Greeted by our professional guide at the airport. Then, check into the hotel. After breakfast, take a bus to Wulong (approximately 3.5 hours drive). Visit the World Natural Heritage Site-**Three Natural Bridges** (including eco-friendly shuttle, 360-degree rotating elevator, and exit electric buggy ride), **Fairy Mountain Forest Park** (including a mini train ride).



Three Natural Bridges

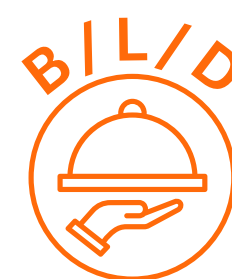
D3 WULONG-CHONGQING

After breakfast, take a bus to Chongqing (approx. 3.5-hour drive). **Danzi Stone Old Street**, **Changjiahui Viewing Platform**, **Yangtze River Cableway (one-way)**, **Guanyinqiao Pedestrian Street**.

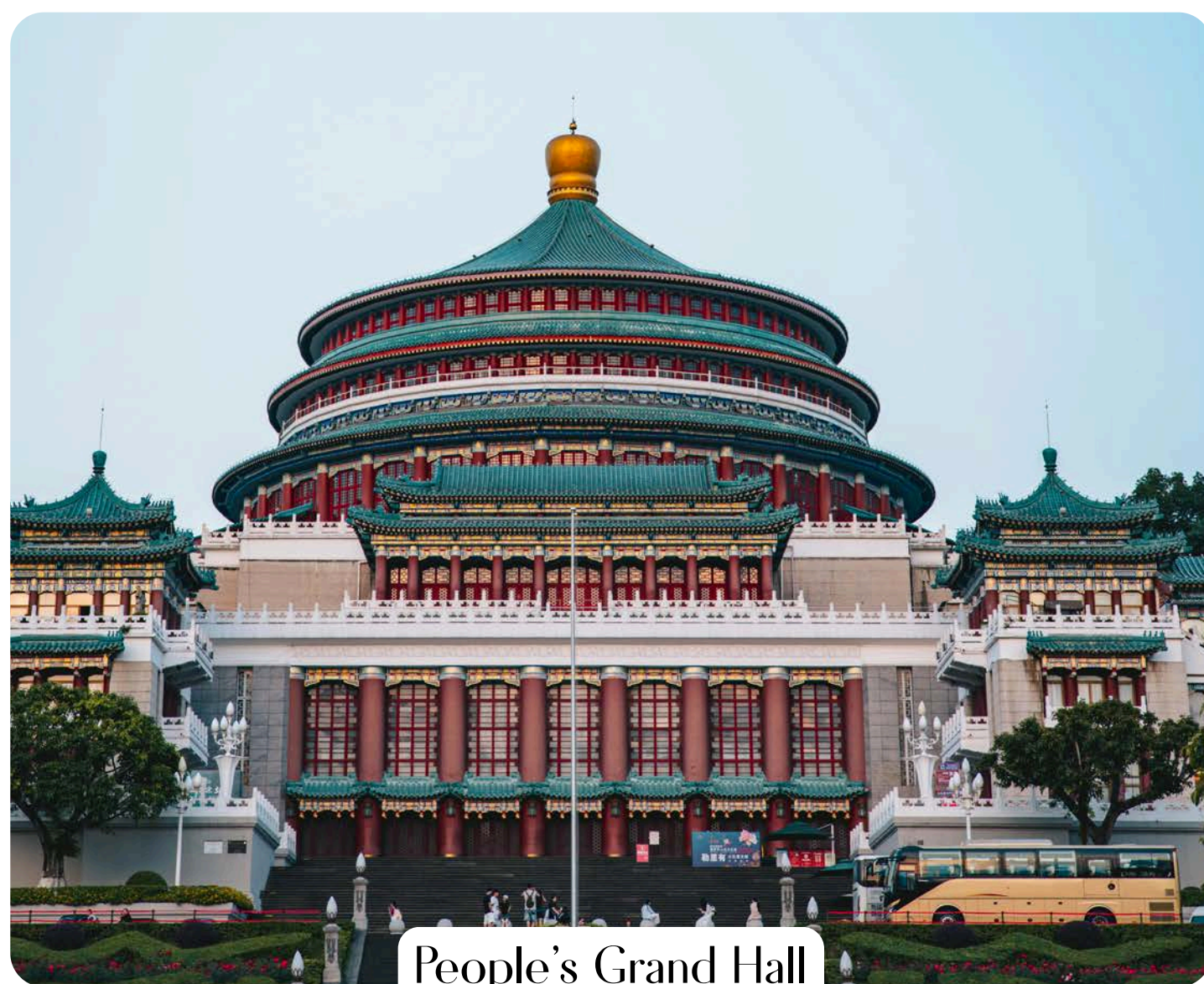


Danzi Stone Old Street

D4 CHONGQING



After breakfast, visit **Ciqi Kou Ancient Town**. Check out the viral hotspot; **Liziba Light Rail Station** (see the train passing through a residential building). View the **People's Grand Hall** (exterior), Explore the **Shi Ba Ti (18 Steps) Traditional Cultural District**, Stroll around **Jiefangbei Pedestrian Street**, Visit the **famous night view of Hongya Cave**. After dinner, transfer to the airport.



People's Grand Hall

D5 CHONGQING ✈️ KUALA LUMPUR

Depart for Kuala Lumpur and return for home sweet home.

On Board Sales:

Chongqing local products, snacks

Local Delicacies:

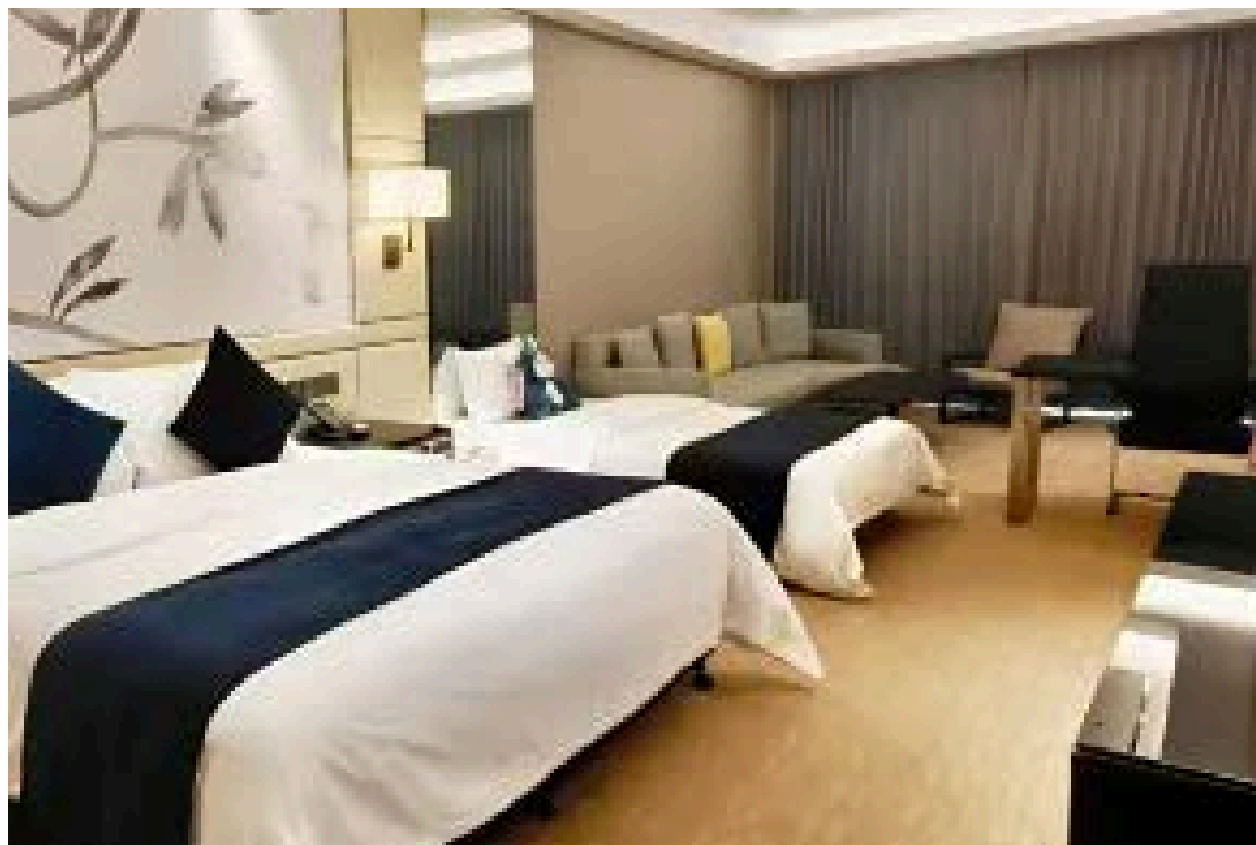
Wulong Delicacies, Free-range Chicken Flavor, Bayu Cuisine, Chongqing Cuisine, Mountain City Cuisine, YuanYang Hot Pot Flavor

The above is subject to final arrangement by the local operator

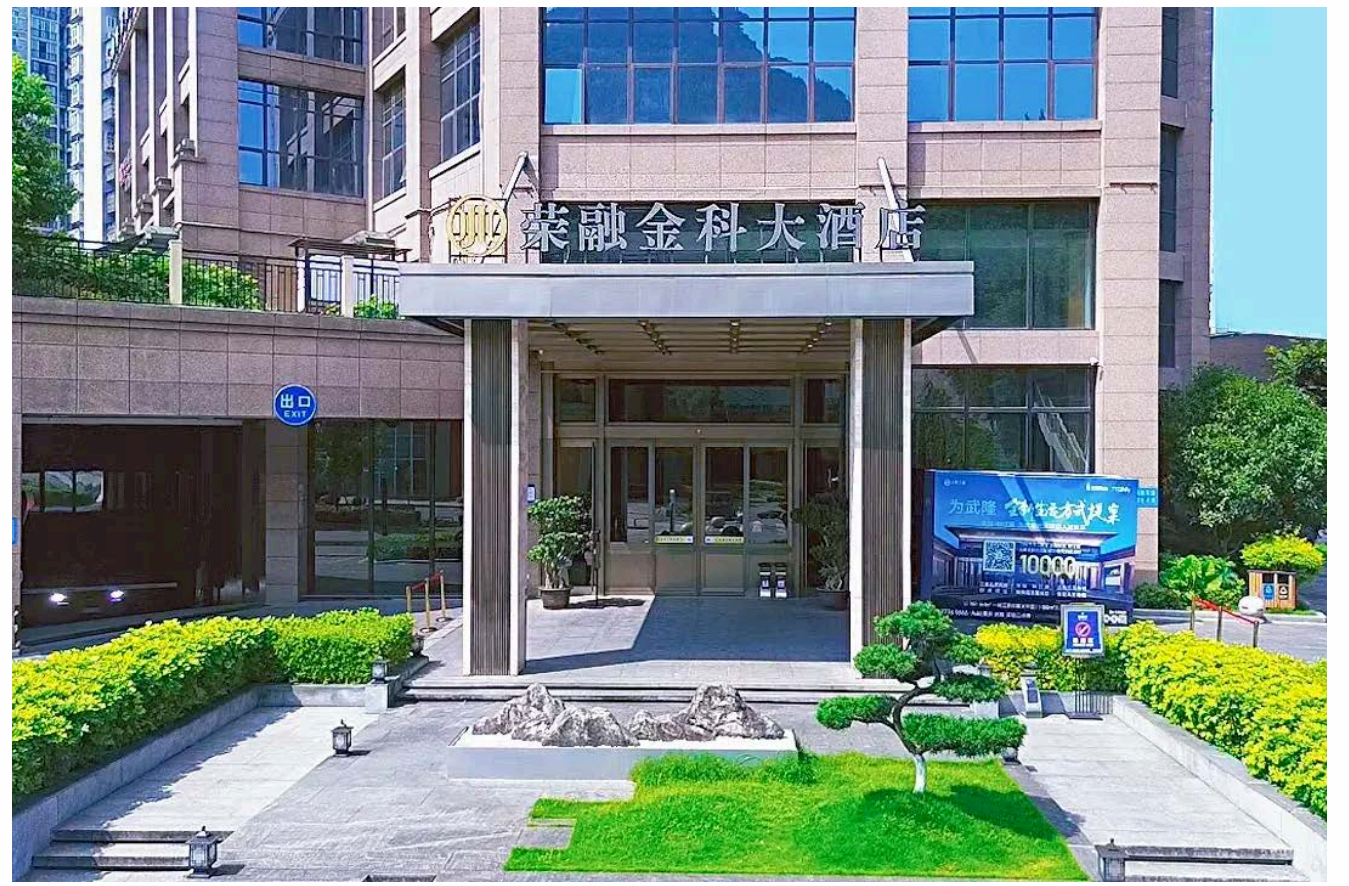


Hotel Reference Photo 酒店参考照片

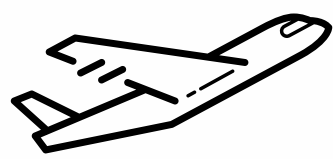
Aolan International Hotel Chongqing
重庆奥蓝国际酒店 ★★★★★



Rongrong Jinke Hotel Hotel Wulong
武隆融荣金科酒店 ★★★★★

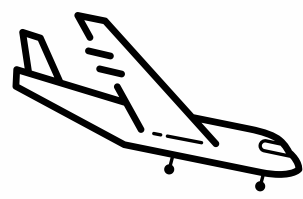


RECOMMENDED FLIGHT 建议航班:



KUALA LUMPUR - CHONGQING

D7 806 (TIME 20:05 - 00:45+1)



CHONGQING - KUALA LUMPUR

D7 807 (TIME 02:00 - 07:00)



DESIGNATED DEPARTURE DATES 建议出发日期

MTH 月份	2026	2027
Jan	10, 24	21, 28
Feb	7	25
Mar	7, 21	11, 18, 25
Apr	11, 25	8, 22
May	16, 30	13, 20
Jun	13, 27	10, 24
Jul	---	---
Aug	---	---
Sep	5, 19	9, 16, 23
Oct	17, 31	14, 21, 28
Nov	14, 28	11, 18, 25
Dec	12, 26	9, 16, 23



PACKAGE INCLUDES 配套包含

- 4-star hotel accommodation (sharing Twin/Triple room) 四星级酒店住宿 (双人/三人间)
- Breakfast at the hotel 酒店早餐
- Lunch & Dinner according to the itinerary 行程中所列午餐和晚餐
- Local transportation (bus / mini van) with driver 当地交通 (巴士/小巴) 及司机
- Professional Mandarin-speaking tour guide 专业中文导游
- Entrance fees to places of interest according to the program 行程中所列景点门票
- Tips for tour guides and drivers 导游及司机小费
- Visit interesting places 参观景点



PACKAGE EXCLUDES 配套不包含

- Flight tickets 机票
- Travel insurance coverage 旅游保险
- Additional surcharges to the offered price: during peak times, festivals, and public holidays 报价之外的附加费用: 高峰期、节假日及公共假期
- Additional hotel services such as laundry, snacks and minibar and porter service 酒店额外服务, 例如洗衣、小吃、迷你吧及行李搬运服务
- Food and beverages not specified in the program 行程中未包含的餐饮
- Additional tours not specified in the program 行程中未包含的额外游览项目
- Excess baggage charges 超重行李费
- Visa (if required) 签证 (如需要)
- Round-trip transportation costs from home to KLIA 1/ KLIA2 往返吉隆坡国际机场1号航站楼/2号航站楼的交通费用
- Other items not specified 其他未列明项目



ADDITIONAL INFORMATION 附加信息

- Itinerary is subject to change subject to circumstances (with or without notice) 行程可能因实际情况而有所变更 (恕不另行通知)。
- Terms & conditions apply 须符合条件与规则

Notes 笔记: