



Seoul is the capital and largest city of South Korea, and its political, economic, cultural, and technological center. Seoul blends ancient palaces with modern skyscrapers, is densely populated, and boasts an extremely well-developed subway system.

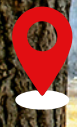
首尔是韩国首都及最大城市，是韩国的政治、经济、文化与科技中心。首尔融合了古老的宫殿与现代化的高楼大厦，人口稠密，地铁交通极度发达。

6D4N
首尔-南怡岛
SEOUL-NAMI ISLAND



-  **Friday 星期五**
 -  **Local Delicacies 当地美食**
Korean-style Jajangmyeon + Tangsuyuk 韩式炸酱面+糖醋肉
Korean-style Bibimbap 韩式拌饭 | Chuncheon Dakgalbi 春川铁板鸡
Pig's Trotters Rice 猪手饭 | Ginseng Chicken Soup 人参鸡
Korean BBQ Buffet 韩式烤肉自助餐 | Potato Stew with Pork Bones 马铃薯炖猪骨
 -  **Famous Tourist Spot 著名地标**
Songdo Fairly Tale Village 松岛童话村 | Nami Island 南怡岛
Gyeongbokgung Palace 景福宫 | Cheonggyecheon Stream 清溪川
- Request For **PRIVATE GROUP** is subject to minimum **16 ADULTS**
要求**独立成团**人数需要至少**16大人**
- GROUND TRAVEL PACKAGE** Fare Excluded Air Ticket
地接旅游配套费用不含飞机票





南怡岛

位于韩国江原道春川市，是1944年建水库形成的半月形人工岛，以韩剧《冬季恋歌》的浪漫景色闻名。岛上拥有水杉林、银杏路等四季美景，被誉为“南怡共和国”，是文化、自然与影视取景地合一的旅游胜地。

D1

吉隆坡 ✈️ 仁川

从吉隆坡国际机场起飞。

D2

仁川

抵达仁川国际机场，在机场出口迎接。海鸥船、仁川唐人街、松岛童话村、新浦国际市场、海苔博物馆(泡菜DIY+韩服)、现代汽车博物馆。



仁川唐人街

D3

仁川 - 南怡岛

星空图书馆、南怡岛、东大门。



东大门

D4

仁川 - 首尔

南山首尔塔(情侣锁墙)、景福宫、青瓦台外观、益善洞韩屋村。



景福宫

D5

首尔

清溪川、好客空间、人参专卖店、保肝灵、化妆品总汇、国际免税店、明洞。

D6

首尔 - 仁川 ✈️ 吉隆坡

参观土产店后送去机场。

当地风味:

韩式炸酱面+糖醋肉、韩式拌饭、春川铁板鸡、猪手饭、人参鸡、韩式烤肉自助餐、马铃薯炖猪骨

以上安排与行程是以当地旅行社最终安排为准

早/午/晚



午/晚



早/午/晚

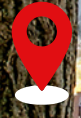


早/午/晚



早





Nami Island

located in Chuncheon, Gangwon Province, South Korea, is a crescent-shaped artificial island formed by the construction of a dam in 1944. It is famous for its romantic scenery featured in the Korean drama "Winter Sonata." The island boasts stunning scenery throughout the year, including metasequoia forests and ginkgo-lined streets, and is known as the "Republic of Nami," a tourist destination that combines culture, nature, and filming locations.

D1 KLIA ✈️ INCHEON

Depart from KLIA.

D2 INCHEON

Greet at airport. **Seagull Ship, Incheon Chinatown, Songdo Fairly Tale Village, Sinpo International Market, Seaweed Museum (Kimchi DIY & Hanbok), Hyundai Motor Museum.**



Incheon Chinatown

D3 INCHEON - Nami Island

Stary Sky Library, Nami Island, Dongdaemun.



Dongdaemun

D4 INCHEON - SEOUL

Namsan Seoul Tower (Love Lock Wall), Gyeongbokgung Palace, Blue House (external tour), Ikseondong Hanok Village.



Gyeongbokgung Palace

D5 SEOUL

Cheonggyecheon Stream, HiKR Ground, Ginseng Specialty Store, Hoganbao Store, Cosmetic Emporium, International Duty Free Shop, Myeongdong.

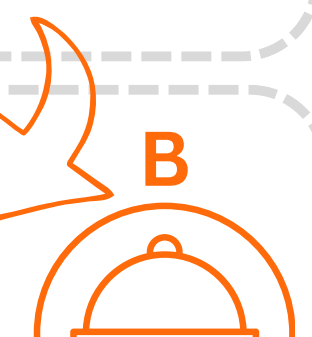
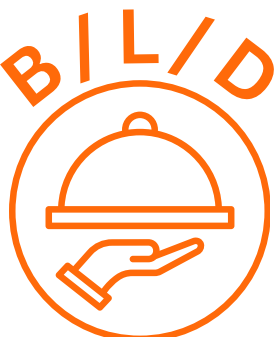
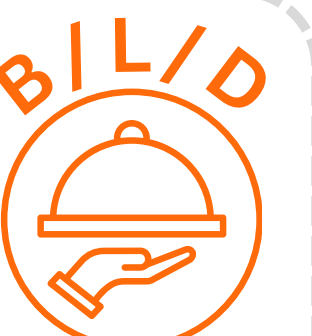
D6 SEOUL - INCHEON ✈️ KLIA

Local Products Specialty Store, transfer to airport by private transport.

Local Delicacies:

Korean-style Jajangmyeon (Black Bean Sauce Noodles) + Tangsuyuk (Sweet and Sour Pork), Korean-style Bibimbap, Chuncheon Dakgalbi (Spicy Stir-fried Chicken), Pig's Trotters Rice, Ginseng Chicken Soup, Korean BBQ Buffet, Potato Stew with Pork Bones.

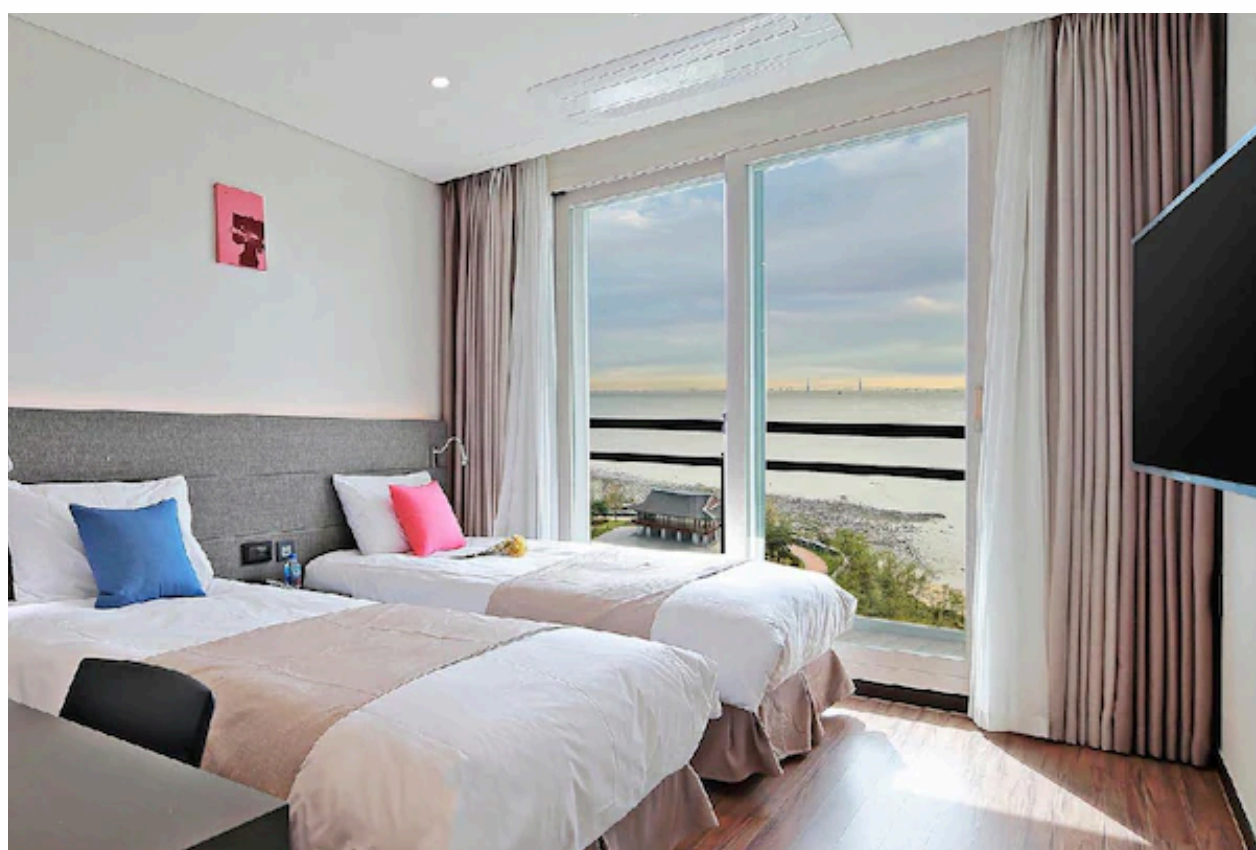
The above is subject to final arrangement by the local operator





Hotel Reference Photo 酒店参考照片

INCHEON AIR SKY HOTEL
仁川空中酒店 ★★★★★



SEOUL MARINA BAY HOTEL

首尔滨海湾酒店 ★★★★★



BLACK OUT DATES 限制不能出发日期

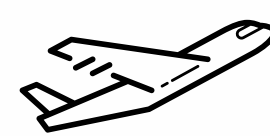
EVENT 节日	2026	2027
Chinese New Year 农历新年	14 - 22 FEB 2026	06 - 14 FEB 2027
Independence Movement Day 独立运动日	28 FEB - 03 MAR 2026	27 FEB - 03 MAR 2027
Children Day Holiday 儿童节假期	01 - 05 MAY 2026	01 - 05 MAY 2027
Summer Escape Holiday 避暑假期	15 JUL - 20 AUG 2026	15 JUL - 23 AUG 2027
Korea Independence Day 韩国国庆	15 - 18 AUG 2026	14 - 18 AUG 2027
Mid-Autumn Festival (Chuseok) 中秋节	24 SEP - 11 OCT 2026	14 SEP - 03 OCT 2027
Hangul Day 韩文节	06 - 10 OCT 2026	06 - 10 OCT 2027
Christmas & New Year 圣诞节和元旦	24 DEC 2026 - 02 JAN 2027	24 DEC 2026 - 02 JAN 2028

DESIGNATED DEPARTURE DATES 建议出发日期

MTH 月份	2026	2027
Jan	9, 23	15, 22
Feb	6	---
Mar	13, 27	12, 26
Apr	3, 17	9, 16
May	15, 22	14, 21, 28
Jun	12, 26	11, 18
Jul	---	---
Aug	---	27
Sep	4, 11	3
Oct	16, 30	15, 22, 29
Nov	6, 20	5, 19, 26
Dec	4, 18	10, 17



RECOMMENDED FLIGHT 建议航班:



KUALA LUMPUR - INCHEON

D7 506 (TIME 22:50 - 06:30+1)



INCHEON - KUALA LUMPUR

D7 505 (TIME 07:45 - 13:15)



PACKAGE INCLUDES 配套包含

- Hotel accommodation (sharing Twin/Triple room) 酒店住宿 (双人/三人间)
- Meals (as per itinerary) 餐 (根据行程安排)
- Local transportation (MPV / Minivan / Bus / Public Transport) 当地交通 (商务车/小型客车/巴士/公共交通)
- Professional Mandarin-speaking tour guide/driver 专业中文导游/司机
- Entrance tickets 景点门票
- Sightseeing 景点
- Local Airport Transport (as per itinerary) 当地机场接送 (依据行程)



PACKAGE EXCLUDES 配套不包含

- Flight tickets 机票
- Visa (if required) 签证 (如需要)
- Optional Tour (if any) 推荐自费 (若有)
- Travel Insurance 旅游保险



ADDITIONAL INFORMATION 附加信息

- Itinerary is subject to change subject to circumstances (with or without notice) 行程可能因实际情况而有所变更 (恕不另行通知)。
- Terms & conditions apply 须符合条件与规则

Notes 笔记: